

PRODUCT SHEET

BLUESTAR EPLAN

INTEGRATION

Manage your mechanical and electronic data in a single solution - Dynamics 365 & AX

Manage Your Mechanical and Electronic data in a Single Solution - Dynamics 365 & AX

KEY BENEFITS

Collaboration across design-domains
Reuse already existing data
MCAD and ECAD integration
One source of truth for product data
Multi-CAD compatibility
Design teams working in parallel

KEY FEATURES

Bi-directional MCAD/ECAD product data synchronization between Bluestar and EPLAN
Create, modify and synchronize EPLAN projects with Bluestar PLM
Automatic BOM generation upon check-in from EPLAN to Bluestar
MCAD/ECAD data in a single solution - D365 & AX

Complex products requiring multi-disciplinary engineering

In today's market in manufacturing, products are more complex than ever, with an increased amount of mechatronic products consisting of both mechanics, electronics and software systems.

This challenge requires a tight collaboration between engineers from all disciplines, which makes not only the product, but the product development process more complex as well.

This complexity generates a lot of both ECAD and MCAD product data, which manufacturers use multiple systems and solutions to manage and maintain. A lack of integration between these systems and interfaces leads to poor data management, handled through manual, error-prone and time-consuming processes, leaving a lot of data-inconsistency in their wake.

For this reason, creating collaboration and synergy between engineering domains working in different environments is nearly impossible.

Key challenges

- Leave an ERP or PLM environment to exchange data with a library for ECAD project data.
- Late stage design changes leading to delays.
- MCAD and ECAD design teams are not collaborating efficiently.
- Disconnected workflows and procedures.
- People using different versions of the same product.
- Separate systems are used for MCAD and ECAD.
- Small but consequential design details are postponed to the next hand-off, instead of sharing them immediately.
- MCAD and ECAD disconnects are not discovered before very late in the design process when it is very expensive to correct.

Key Features and Benefits

Seamlessly share multi-disciplinary CAD data for optimum efficiency

Bluestar EPLAN integration allows you to define your products by supporting a BOM containing both electronic and mechanical components existing in a single solution, Dynamics 365 (D365) & AX, for everyone in the enterprise to share product information, which facilitates the communication across Engineering disciplines and Operations and Manufacturing.

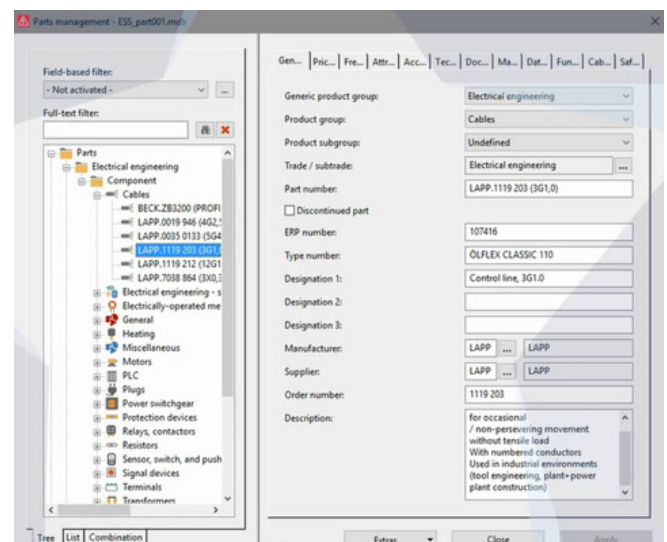
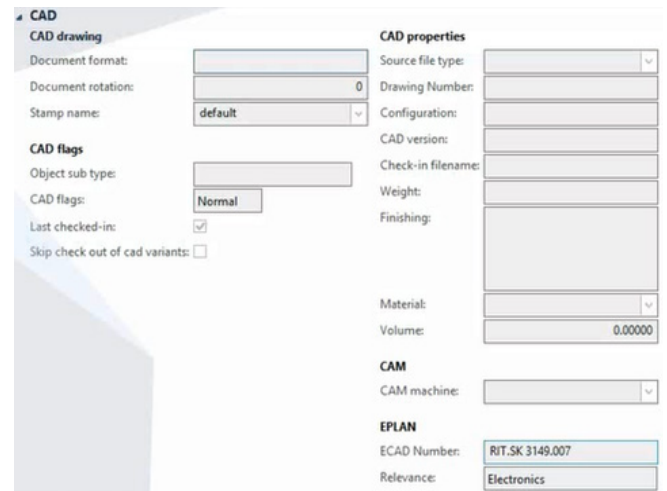
Bluestar PLM does this, by supporting a full integration with EPLAN – a library for all your electronic components and designs, which monitors the entire product lifecycle through all phases from design to disposal of the product from within the D365/AX environment.

By automatically synchronizing data bi-directionally between EPLAN and Bluestar PLM, you will have your MCAD/ECAD product data centralized in a single structure for each of your products. As a result, from Bluestar you are able to orchestrate development processes from start to finish where engineers across domains work on the same page throughout.

Complete design data in D365&AX for faster time-to-market

By automatically synchronizing data bi-directionally project data between EPLAN and Bluestar PLM, you will have all your designs for electronic (ECAD) and mechanical (MCAD) components aligned and contained in a single system.

The synchronization gives your Design teams the ability to share design information and engineering changes in real-time. In turn, the design process becomes more streamlined, with fewer bottlenecks between domains and a faster time-to-market. selected Dynamics 365/AX tables and fields between locations.



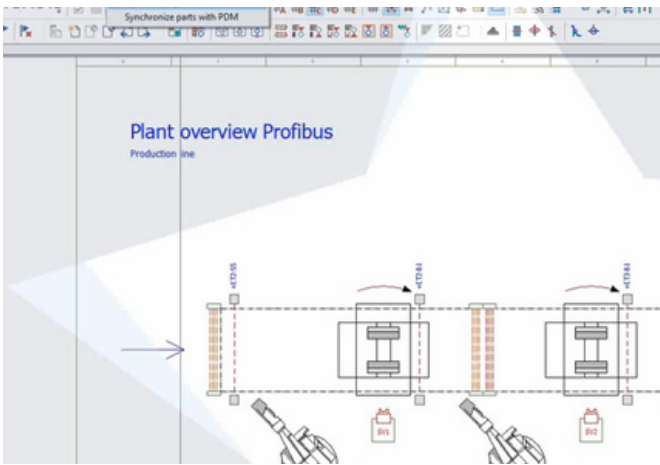
Key Features and Benefits

Complete data visibility for data reuse and fewer manufacturing mistakes

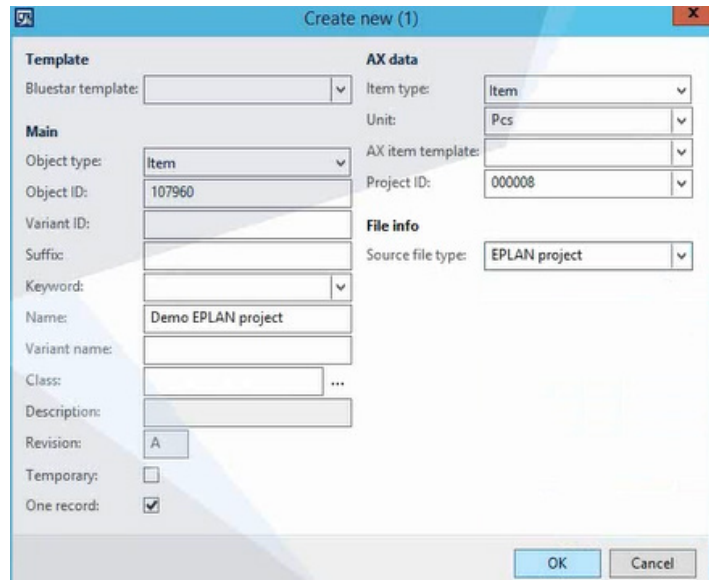
The interconnection between EPLAN and Bluestar PLM, allows you to seamlessly create EPLAN projects for electronic product designs inside both applications.

Bluestar automatically assigns a unique ID to the project, so users can easily find, reuse and modify data at any time to save.

The ability to synchronize your MCAD/ECAD projects, make users versatile, so they won't have to switch between applications. As a result, your product development process becomes more efficient, saving you time and money.



Projects are easily created and checked out/in between Bluestar PLM and EPLAN. The process of exchanging data requires no manual work.



Projects are easily created in Bluestar PLM and seamlessly checked out into EPLAN.

Automate processes for fewer errors and less waste

Upon checking out a project from Bluestar PLM, The project is automatically transferred into EPLAN. From here modifications, are immediately applied to the project in Bluestar PLM, when checking it back in.

Whenever designers are making routes, schematics, board shapes and more in EPLAN, they no longer have to manually exchange data between systems, which is both a time-consuming and error-prone process.

Early release BOMs to avoid delays and limit costs

Bluestar PLM allows you to release a partial BOM, with both ECAD and MCAD design data, so long-lead items can be procured early in a project.

In turn, Operations and manufacturing will not face the release of an avalanche of parts late in the product that are expensive and take months to get delivered, while they will be notified about future requirements for parts released later on.

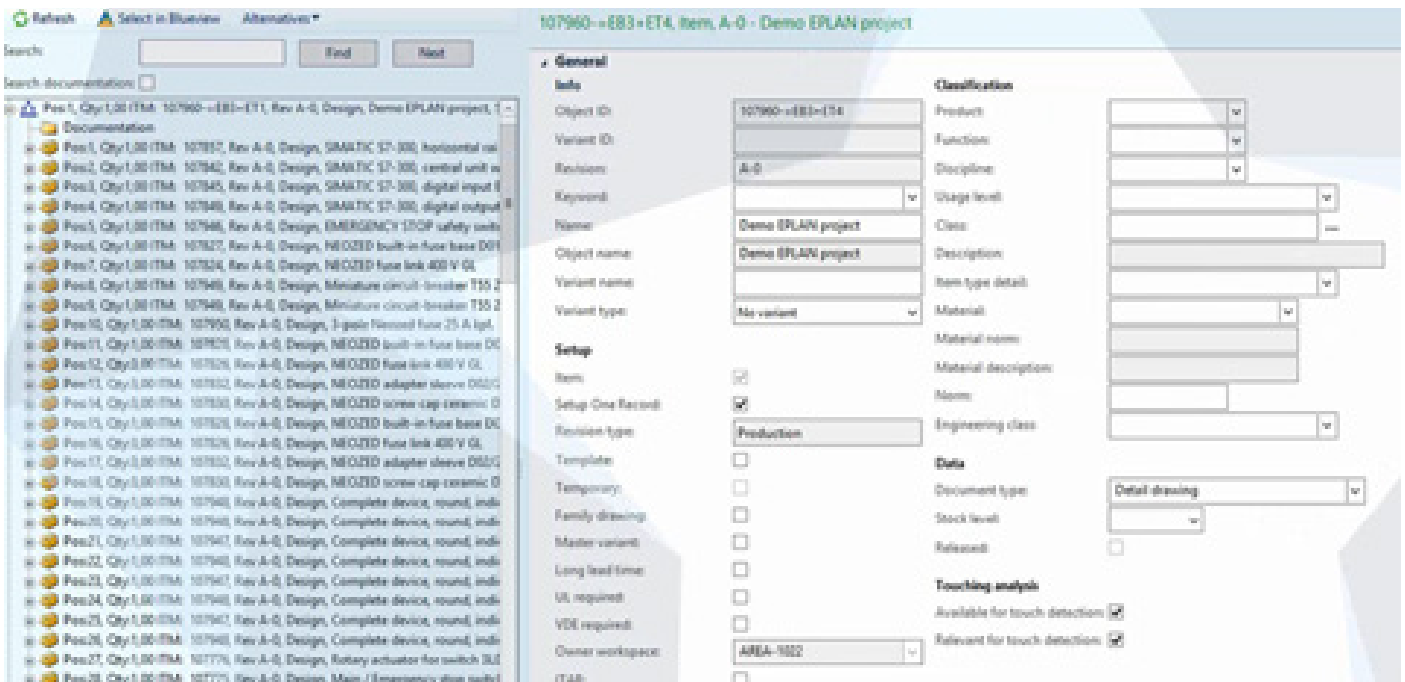
Key Features and Benefits

MCAD/ECAD data in a single structure for improved collaboration across the enterprise

When the project is checked back in you can look at the results in Bluestar PLM. Within the BOM structure you can see all the components for each level in the BOM and sub-BOM.

With MCAD and ECAD data combined in a single structure in a common system, your enterprise will be truly connected and on the same page, from start till finish of the design process.

As a result, you mitigate the risk of mistakes and data inconsistencies, which only become more expensive as a project reaches production and production.



When EPLAN projects are checked into Bluestar the entire assembly consisting of the complete MCAD/ECAD BOM is displayed in a single structure.

KEY BENEFITS

Collaboration across design-domains	By having mechatronic BOM's in a single solution, users from all Engineering disciplines can communicate design-intent and share synchronized BOM revision for fewer errors and improved product quality.
Reuse already existing data	Modify and reuse existing MCAD/ECAD data, for future projects. Shortens lead time and limits time and money wasted on re-work.
MCAD and ECAD integration	With all your ECAD/MCAD data in one solution, you will avoid spending time and money on manual and error-prone processes connected with re-creating or exchanging data between several applications.
One source of truth for mechatronic product data	Monitor all your workflows, activities, revisions, modifications and engineering changes connected with MCAD/ECAD product data in a single system, to become more efficient and lessen the management burden.
Growing BOMs	Release parts.
Design teams working in parallel	Bring all your design domains onboard the same platform - D365&AX - for a streamlined and efficient product development process, which exposes issues for fewer costly mistakes late in the design process.

FEATURES

Bi-directional electronic library data synchronization between Bluestar and EPLAN	Synchronize all your ECAD project data such as drawings, schematics, BOMs for your printed circuit boards (PCB) and other electronic projects, from EPLAN to Bluestar, to have your MCAD/ECAD data centralized and accessible from within the D365&AX environment.
Create, modify and synchronize EPLAN projects from Bluestar PLM	Create and automatically transfer an EPLAN project from Bluestar to the EPLAN upon checking the project out from Bluestar.
Automatic BOM generation upon check-in between Bluestar and EPLAN	A BOM for the EPLAN project is automatically created upon checking the project into Bluestar. The product BOM contains all your MCAD/ECAD data for the product, giving all users access to the complete product from a single touchpoint.
Full history and activity log for BOM and item changes	Analyze, backtrack and audit your products and activities to find out who did what, when and how.
Multi-CAD compatibility	The bi-directional synchronization between Bluestar and EPLAN allows you to use both ECAD and MCAD solutions, while still being able to retain and synchronize MCAD/ECAD data in single BOM in D365 & AX.
Global and Multi-site synchronization of MCAD/ECAD data	As a cloud-based solution, Bluestar PLM embedded in ERP allows all users and design teams dispersed across locations, to access MCAD/ECAD product data any time, anywhere from within D365&AX.