

BLUESTAR BUSINESS PROCESS MANAGEMENT (BPM)



BLUESTAR PLM[®]
PLM inside Dynamics 365

Design, manage and automate your end-to-end business processes in Dynamics 365 & AX.

KEY BENEFITS

- Tightened corporate-wide collaboration;
- Best-practice working procedures;
- Document activities and meet regulatory requirements;
- Overview of business process performance;
- Leaner and more agile processes;
- Reduced costs and higher revenue.

KEY FEATURES

- Graphical workflow monitoring;
- Audit trail;
- Email and D365/AX Alerts integration;
- Engineering change management integration;
- Customizable performance reporting.

Efficiently managing business processes is a major challenge for engineers and manufacturers who execute complex procedures on an everyday basis.

The challenge lies in the coordination and passing of information, tasks and documents between in/external participants from different departments and geographic locations.

Ensuring that your company is performing optimally is a matter of getting your business processes under control by facilitating the passing of this information through your business processes. Without formal procedures or a lack of conformance to existing procedures, errors happen, while a lack of the statistical tools to do performance analysis makes it difficult to spot the causes of these errors.

Where most solutions for managing business processes can route work between people, they often have difficulty integrating to third party IT systems. In turn, collaboration between departments and companies seems impossible, with obvious information gaps preventing full information exchange between participants.

Streamline your end-to-end business processes with Bluestar BPM

With Bluestar BPM, you can streamline and standardize your corporate business processes by defining best practices for the different activities within your company. Workflows generated with Bluestar BPM allow you to automatically delegate tasks and design, deploy and monitor end-to-end business processes, helping you achieve a high level of efficiency in the execution of automated and streamlined work procedures, regardless of the level of complexity, scale and scope.

Bluestar BPM consistently analyses, automates and improves processes, removing waste, and other steps that are slow and cumbersome. When waste is removed, you can streamline your processes and focus on what matters - innovating your services and products.

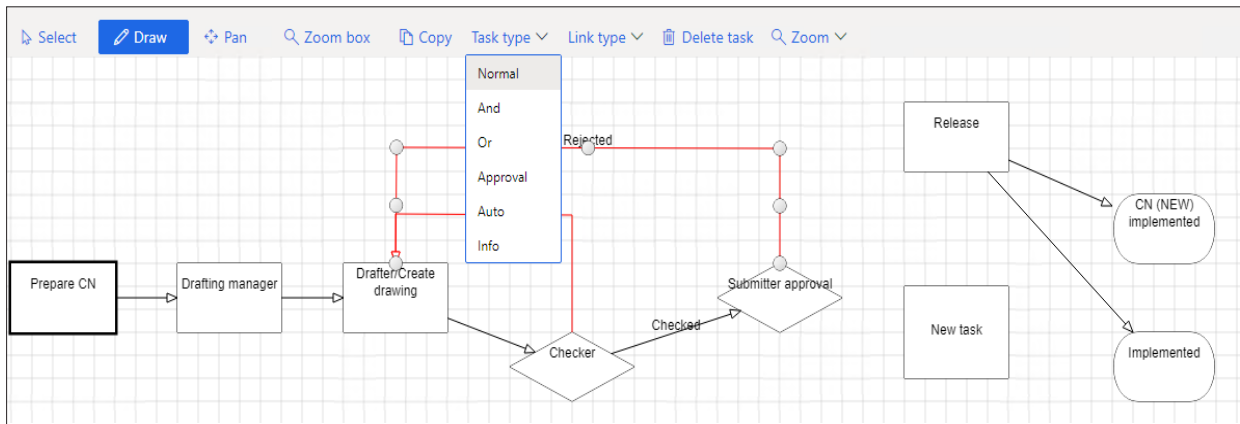
FIND US

www.bluestarplm.com

Key Features and Benefits

Generate easy-to use interactive workflows - no coding required

In Bluestar you can create graphical workflows that help you optimize business processes and ensure that corporate and regulatory procedures are followed. Bluestar non-technical users are capable of easily designing drag-and-drop graphical workflows - with multiple steps and stage-gates.



Easily design drag-and-drop graphical workflows to drive your business processes.

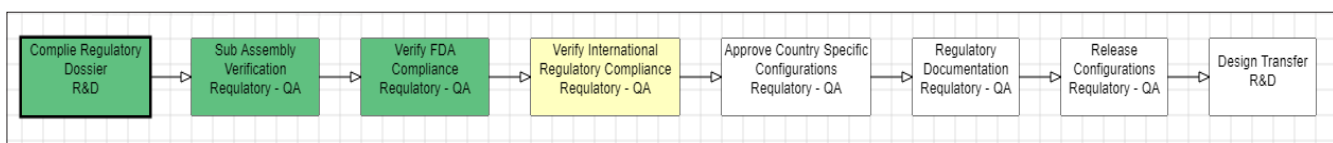
Tighten corporate-wide collaboration

Once a workflow has been designed and activated, Bluestar will automatically delegate the associated tasks to individual or groups of participants.

As tasks are assigned, completed and automated in Bluestar and as the workflow moves forward, information is distributed across participants - operating within the D365/AX system - which depend on the completion of previous tasks in the workflow. In this way, all activities are monitored and controlled throughout the process, making you more efficient and less prone to make errors.

With a detailed level of information for your business operations, redundancies are eliminated, issues can be identified and excessive labor costs and resources can be highlighted.

When you have an overview of end-to-end processes spanning across the enterprise, collaboration improves between Engineering, Operations and Manufacturing. This also makes it easy for you to audit your business processes, and back-track the full history of activities, so you can locate and prevent future issues to run a more efficient business.

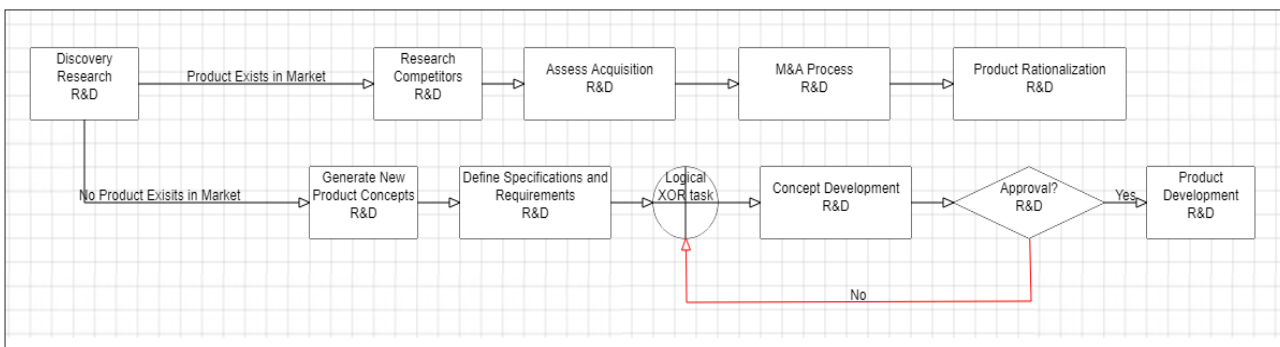


As you complete individual tasks in the workflow, color coding shows you which tasks are completed and which ones are currently active.

Monitor processes in real-time for fewer errors and bottlenecks.

Users can set up task rules to determine the responsibilities of stakeholders involved in processes. The rules you utilize, determine when it is required to complete, approve or reject tasks, which can lead to several different outcomes in your processes, depending on whether certain conditions are met.

Task rules allows you to control every step and possible scenario and outcome for your processes, so stakeholders can easily understand what actions must be taken to meet requirements, making your business processes more efficient.



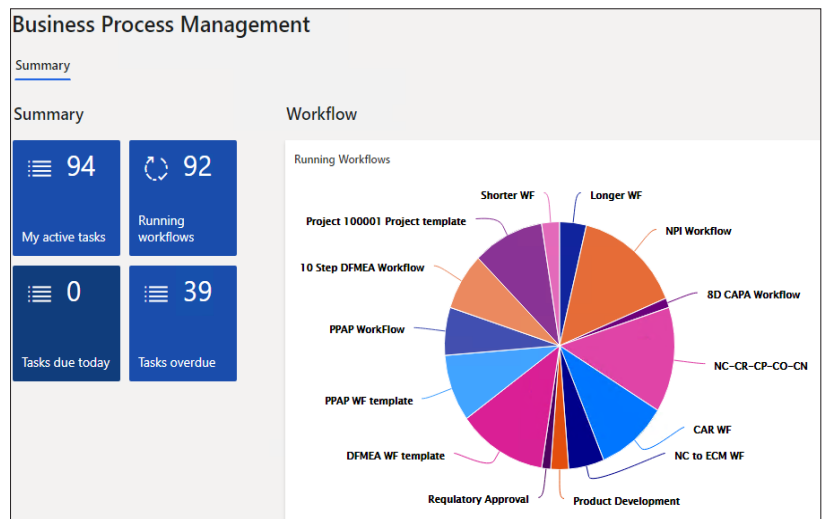
Stage gates lets users decide which of several tasks in a workflow must be completed to execute the process depending

Track activities and performance

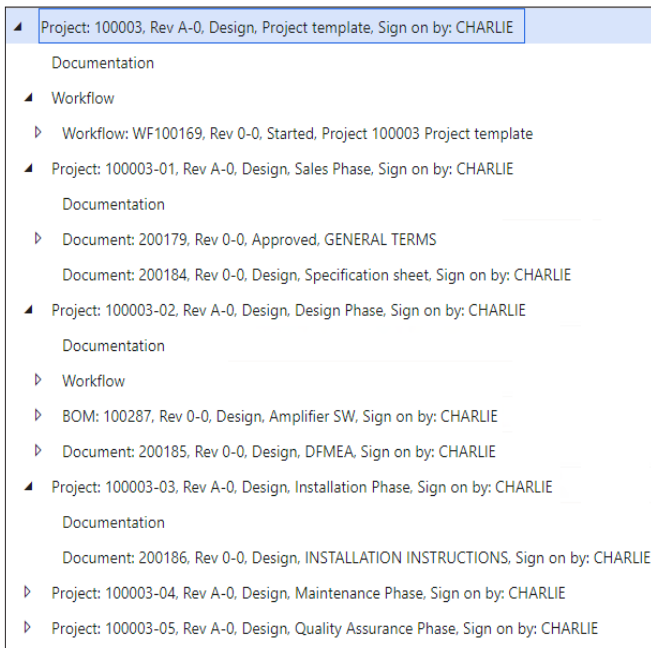
Workflows combined with Alerts in D365/AX ensure that tasks, information and workflow progress is automatically distributed to stakeholders involved in the business process. This helps drive workflow efficiency and empower people to keep a close, accurate eye on what is happening across the business process.

Whenever participants are required to take action, they will receive not only an email, but alerts will also deliver automatic notifications of changes and events critical to their job.

The reporting dashboards will help you monitor and understand your business processes for enhanced transparency to operational performance and the ability to respond to issues quickly.



Notifications on active tasks and running workflows can be displayed in the the D365&AX workspace.



All data associated with a project is contained in a single multi-leveled structure for easy data access

Reuse best-practice procedures for future capitalization

For manufacturers performing consistent ECOs, it is crucial to have workflows run smoothly, fast and with as few mistakes as possible.

Using reusable workflow templates you can retain best-practice standards for future capitalization of previous efforts that can be used over and over. In turn, your enterprise becomes more efficient, as you save time, reduce errors and ensure procedural conformance.

For more on Engineering Change Management read [here](#).

Manage projects from a single solution for more efficiency

In Bluestar, all project-related data (including workflows) are contained in a single multi-level structure, accessible from a single viewpoint.

When all this data is centralized and prone to realtime changes, users have access to any project-related information at any point during the associated business process.

In turn, users will find it easy to hand over information between tasks, without experiencing bottlenecks, making for better collaboration between participants and more efficiency.

Workflow templates can be reused for consistent ECO processes.

KEY BENEFITS	
Coporate-wide collabora- tion;	Workflows are deployed in an enterprise-wide context, enabling Engineering and Operations to col- laborate more tightly across departments and locations, for reduced errors and faster lead times when everyone involved in projects are interconnected in one system;
Implement best-practice working procedures;	Your company will become more homogenous and rational in its internal processes leading to consistent performance and increased efficiency. In addition, the management burden associated with supervising business processes is reduced due to the high level of automation and process- transparency provided by the Bluestar;
Document acitivites and meet regulatory re- quirements	Enforce procedural compliance. Best-practice workflow templates are re-used in repetitive business processes ensuring that official and compliant procedures are followed every time;
Leaner and more agile processes	achieve greater control and agility to create of your businesss processes by creating, modifying and reusing workflows to adapt to business processes;
Reduced costs and higher revenue	Improve financial performance with an efficient use of resources, less waste and a faster time-to- market for new products;

FEATURES	
Microsoft D365 & AX integration;	Workflow Automation is fully embedded in Microsoft D365&AX and therefore works like and with other Microsoft technology. Workflow Automation offers a familiar user interface and is easy to maintain, develop and upgrade.
Graphical workflow monitoring;	Graphical workflows provide exceptional overview of the procedures they document and color-coded tasks provide a real-time overview of the progress made in individual workflows.
Drag & drop design;	Workflows are created quickly and intuitively by simply dragging workflow tasks, gates and links onto a graphical workflow grid. Absolutely no coding is required making it a user friendly tool for non-technical staff members.
Workflow templates;	Existing workflows can be saved as best practice templates for reuse in repetitive business processes. This ensures corporate conformance and performance every time.
Task Rules;	Helps you reduce errors awnd control your processes, with task rules that automatically reminds and require people to perform one or multiple tasks or review them, depending on whether certain conditions are met in the process.
Workflow validation;	Once a new workflow has been designed, the workflow logic can be validated by the click of a button. Any illogical coherences in the workflow will be pointed out to the user for revision.
Audit trail;	An activity log provides a complete audit trail containing all implemented workflow events.
Reporting dashboard;	Workflow Automation enables managers to easily generate customizable charts based on workflow statistics and parameters, using the D356 Worspace.
D365/AX Alerts integration;	D365/AX pop-up Alerts notify users when they receive new workflow tasks in their task inbox Workflows are triggered by Dynamics AX Alerts. Alerts triggered can automatically initiate workflows in order to ensure conformance with the company's best practice procedures.

FEATURES (CONTINUED)

Object links;	Any workflow task, and any workflow, can be linked to any object. This gives the user access to data existing in one or several projects and the associated information on tasks, files and subprojects from a single touchpoint - a single object in Bluestar.
Check lists;	Checklists can be added to individual tasks, giving the responsible a list of tasks, that each needs to be done and ticked for the main task to be complete. Ensures users don't make mistakes and finish all required subtasks.
E-mail integration;	Users receive e-mail notifications upon incoming workflow tasks for improved user responsiveness and shorter cycle times. Simply click on a dynamics link in the e-mail to drill down to the task data.
Multi-site collaboration;	Workflows are deployed in enterprise-wide context breaking down silos between departments and locations, enforcing efficient company-wide collaboration with fewer bottlenecks and errors.
And/or gates;	Stage gates lets users decide which of several tasks in a workflow must be completed to execute the process depending on whether or not certain conditions are met. This helps you make more complex workflows that takes into account more complex scenarios and outcomes.
In-process modifications;	You can make modifications to already started workflows. This provides flexibility in everyday use for improved agility and productivity.
Engineering Change management Integration.	Revise and manage all your items and related activities so you will always know which is the latest version. With revision you can also backtrack to find out how and when errors or mistakes happened during engineering change processes.