



# BLUESTAR PLM®

PLM inside Dynamics 365 for Operations & AX

## MICROSOFT DYNAMICS 365 & AX INTEGRATION

### KEY BENEFITS

Boost collaboration between engineering, purchasing & manufacturing teams

Eliminate redundant data entry

Prevent errors caused by duplicate data and documents

Simplified IT infrastructure & system maintenance

Centralized master data

**PLM was originally conceived as a way to establish visibility around product data and processes throughout all stages of the product lifecycle. However, much of the information required to do so is found in the ERP system.**

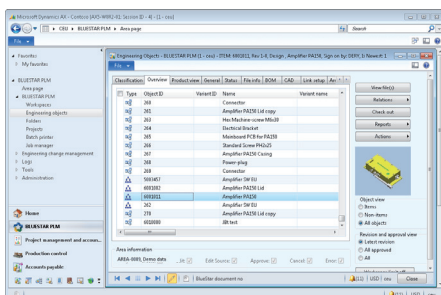
BLUESTAR PLM is a native Microsoft Dynamics 365 for Finance and Operations (365fO) & AX application which is fully embedded in the 365fO & AX user interface and uses the same data model. By merging ERP and PLM environments into a single collaborative setting, the solution integrates the company across departments and locations. This greatly improves performance in cross-functional business processes involving sales, engineering, purchasing and manufacturing teams.

BLUESTAR PLM creates a centralized set of product truths, which are shared seamlessly across departments and locations. Moreover, because everyone is working in an integrated environment, data is only entered once and is centrally maintained thereafter. As a result, you will spend less time entering data, and prevent errors caused by data discrepancies that occur when PLM and ERP systems are separate entities.

Best-in-class manufacturers are looking towards ERP-embedded PLM because they have acknowledged the bi-directional dependencies that exist between engineering and downstream departments.

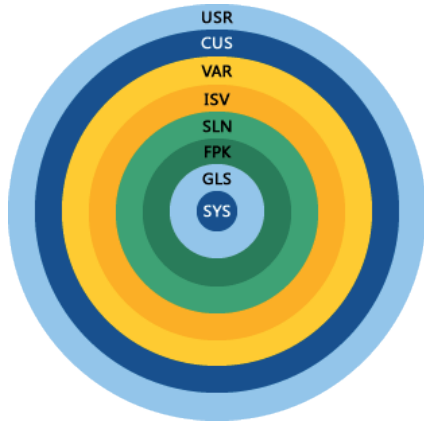
For instance, the data and documentation produced by the engineering department is consumed by the purchasing and manufacturing teams, and, in return, ERP data such as prices, stock levels, and lead times are crucial in the business-minded engineering practice.

BLUESTAR PLM provides the integrated platform needed to deliver complex products according to detailed customer specifications while adhering to engineering standards, and taking supply chain restrictions and manufacturing capacity into account.



## EASY MAINTENANCE

The Microsoft Dynamics 365fO & AX layer concept enables BLUESTAR PLM to be easily installed, modified and maintained as an integral part of Dynamics 365fO & AX without any unwanted implications on your core solution.



The layered architecture enables you to make modifications to elements in a layer without changing the elements in a lower level. When you modify an element, a copy of the element with your modifications is stored in the current layer. The element on the lower layer is not affected.

BLUESTAR PLM is typically deployed in the ISV layer, meaning that it will not impact the elements of the layers below it which make up the core of your Dynamics AX solution.

As a result, it is easy to maintain and modify BLUESTAR PLM as an integral part of AX without any unintended impact on Dynamics 365fO & AX. Moreover, BLUESTAR PLM is a native D365fO & AX application and requires no expertise in the operation and maintenance of a particular PLM solution.

## SIMPLIFIED INFRASTRUCTURE

Since BLUESTAR PLM is embedded in Dynamics 365fO & AX, it requires neither a dedicated PLM server nor maintenance of a separate PLM database.

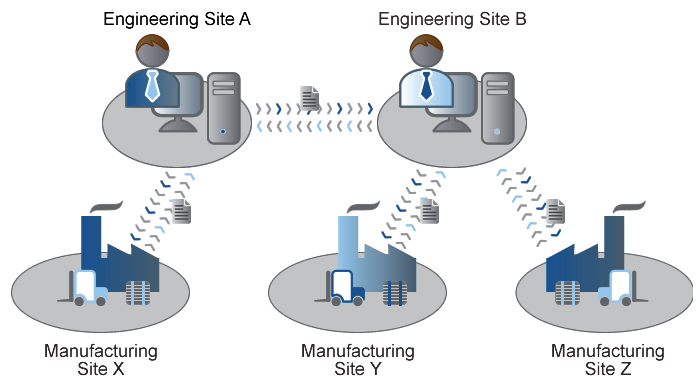
## CUSTOMIZABLE

Because BLUESTAR PLM is developed in the Dynamics 365fO & AX integrated development environment, modifications to the solution can be made through your internal AX resources, helping to lower the cost of customization.

## GLOBAL DEPLOYMENT

BLUESTAR PLM supports multinational manufacturers in their efforts to share business-critical data and collaborate across geographically dispersed locations.

Whether your company has deployed a centralized Dynamics 365fO & AX using Citrix or Terminal Services or you have multiple local Dynamics AX installations scattered across the globe, BLUESTAR PLM features robust data sharing capabilities.



For those who are running multiple Dynamics 365fO & AX installations, but still have the need to exchange information and collaborate, BLUESTAR PLM provides the ability to share selected Dynamics AX tables and fields between locations.

## A FUTURE PROOF SOLUTION

BLUESTAR PLM is exclusively a Microsoft Dynamics 365fO & AX application and will support future Microsoft releases so you can continue to benefit from your investment. Currently, the following versions of Dynamics 365fO & AX are supported.

- Microsoft Dynamics 365 for Finance & Operations
- Microsoft Dynamics AX 2012
- Microsoft Dynamics AX 2009
- Microsoft Dynamics AX 4.0
- MBS Axapta 3.0

In addition, BLUESTAR PLM supports a range of CAD systems with bi-directional integrations. Please visit our website [www.bluestarplm.com](http://www.bluestarplm.com) for more information.